

The Carlyon Farmhouse  
Delta College

Three Centuries  
of Change





*Welcome to the Carlyon Farmhouse, a 130-year-old former home on the campus of Delta College with a long and rich tradition of history. We're pleased you are joining us to experience this wonderful facility.*

### **HISTORY**

Records show that the Carlyon Farmhouse was built on a plot of farmland around the 1870s. Until Delta College acquired it in 1958, the private home had been owned by three generations of one family – the Bauers.

#### ***First Generation of Settlers***

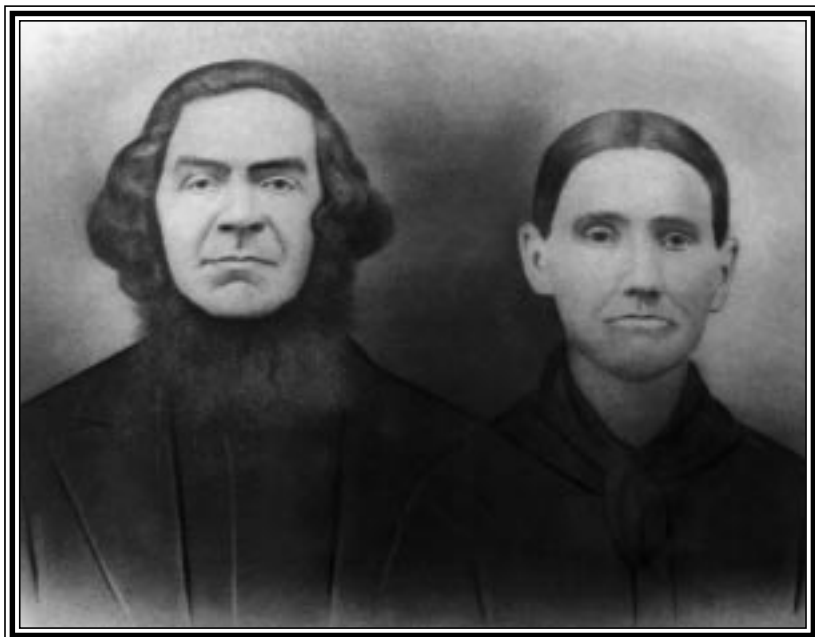
The first settlers of the homestead were George Adam Bauer (1816-1894), a shoemaker and harness maker, and Anna Katharina (Leinberger) Bauer (1817-1902), a housewife.

The Bauers were originally from Rosstal, Bavaria, and relocated to the small

community of Frankenlust, Michigan (with a very strong German community and flavor). When George arrived in the United States from Bavaria, his occupation as a harness maker was in great demand.

---

**The first generation:  
George Adam Bauer and  
Anna Katharina Leinberger Bauer**



## The Carlyon Farmhouse

Family members indicate that one of the lumber mills in Bay City offered to sell him 40 acres at what is now 6<sup>th</sup> and Water Streets in Bay City, for about 12 cents an acre. Lumber mill management offered to build a home and workshop for him, and supply him with tools and all necessary equipment. He refused the offer because he felt his loyalty belonged to the people in Frankenlust. He and Anna, who married in 1844, settled on the farm in 1852.

Anna lost her sight as a result of a snakebite while she and her husband were haying. George took her to a doctor in Detroit when it became apparent that she was blind, and her sight could not be saved. Family members indicate that, after the accident, she spent many hours in a rocking chair in the kitchen or on the porch.

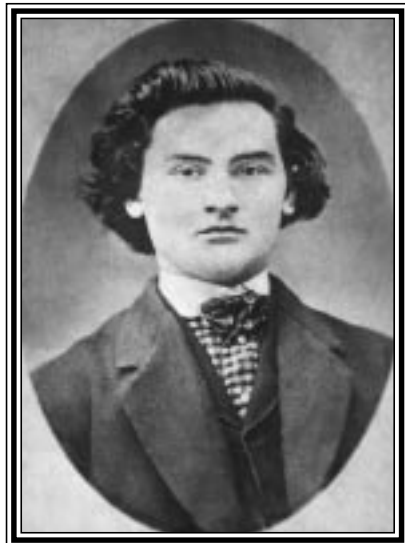
They were the parents of Conrad Wolfgang Bauer, who purchased the farm from them. They made their home with their son until their deaths.

The Bauers are buried in St. Paul's Lutheran Cemetery in Frankenlust. Family members have been told that they were the first couple buried in the cemetery.

### ***Second Generation of Settlers***

There are few records on the Bauers' son, Conrad (1849-1927) and his wife, Anna Barbara (Schwab) (1848-1892). They were married in 1875. They became the parents of seven children – John, Elizabeth (Eichinger), George, Martin, Margareth (Zeilinger), Catherine (Ludgin) and Stephen.

Conrad was about three years old when his parents came to Frankenlust. Conrad was



**The second generation:  
Conrad Bauer and  
Anna Barbara Schwab Bauer**

## The Carlyon Farmhouse

a shoemaker and farmer. The Bauers made their home with their son, Stephen, when he bought the farmhouse.

The Bauers are also buried in St. Paul's Lutheran Cemetery in Frankenlust.

### ***Third Generation of Settlers***

Stephen Bauer (1891-1971) lived on the farm all his life. He married Anna (Pett) (1894-1978) in 1923. The couple, who had two children (one died after being carried

full-term, and the other one miscarried), had a life lease on the house

Stephen purchased the farm from his parents. The Bauers raised cows and separated the milk every day to make butter. Stephen had a butter and egg route in Bay City every Saturday, delivering his produce to homes. Sometimes, he also would have apples and grapes from the farm. An ice-house was built on the property to store produce. It was later torn down.



**The third generation:  
Stephen Bauer (second seated man from the right) and  
Anna Pett Bauer (second standing woman from the right),  
on their wedding day.**

### **PURCHASED FROM THE BAUERS**

The Tri-County Commission acquired the homestead from Stephen and Anna Bauer in 1958, when officials bought a square-mile block of Frankenlust Township on which to construct Delta College. The Farmhouse owners, Steven and Anna Bauer, were offered

the following options: they could move their home or opt for a life lease. They chose the second option, and lived the rest of their lives there. The couple farmed portions of Delta College's land.

The Carlyon Farmhouse



Two Bauer family weddings at the farmhouse. Both were held in the 1920s.

## The Carlyon Farmhouse



**Don and  
Betty  
Carlyon**

### **THE CARLYONS**

The former president of Delta College, Don Carlyon, and his wife, Betty, took up residence in 1980 and lived in the Farmhouse until his retirement in 1995.

As Farmhouse residents, the Carlyons hosted numerous gatherings, including an annual Christmas Open House for community leaders and friends of the College. In addition, fundraising events, barn dances and post-game celebrations for basketball officials and coaches were scheduled.

The Carlyons frequently opened their home to civic, social and business leaders for small meetings, recognizing that the warmth of the environment enhanced such gatherings. During the last several years that they lived there, between 1,200 and 1,300 individuals visited the Farmhouse each year.

### **EARLY RENOVATIONS**

The home was built in four phases as the Bauer family grew, starting in the 1870s and ending about 1910. A section of the house and a shed are constructed of concrete blocks made on the property.

In 1980, after the death of Stephen Bauer's wife, Anna, remodelers removed the wood-burning stove that she used to prepare meals in her kitchen, but left intact the wooden staircase to the second story to preserve the natural wearing of each step in its center.

### **CURRENT RENOVATIONS**

In 1998, the Charles J. Strosacker Foundation in Midland donated \$500,000 to the Delta College Foundation to renovate and convert the Farmhouse into a meeting facility. In 2000, the Strosacker Foundation awarded an additional \$200,000 to Delta College. Of this amount, \$150,000 will be

## The Carlyon Farmhouse

used to establish an endowment. Interest from the endowment will be used to maintain the Carlyon Farmhouse. The remaining \$50,000 will be spent on expanding the facility's parking area. The Farmhouse can host workshops, a performing arts program, a public lecture series, and faculty and staff retreats.

"The Farmhouse will provide a central site for community leaders to come together and discuss common issues that pose challenges to Saginaw, Bay and Midland Counties," said Eugene C. Yehle, chairman of the Strosacker Foundation, during a press conference to announce the gift. "It's imperative that we continue to foster a climate of cooperation among the Tri-County communities as we approach the 21<sup>st</sup> century."

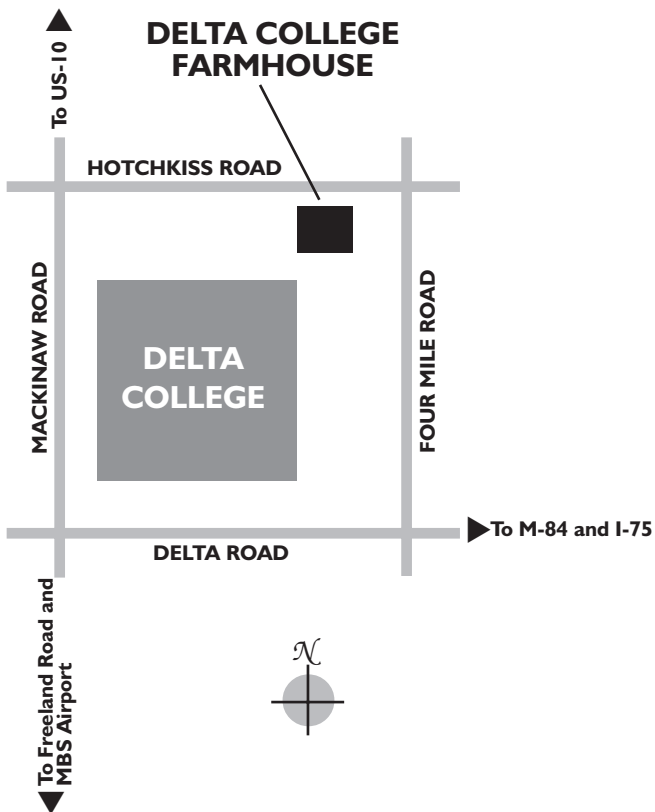
The funding from the Strosacker Foun-

ation has allowed significant changes to be made to the Farmhouse. The home has been completely rewired. A room has been built onto the back of the structure, allowing for additional meeting capabilities. A deck was added to the outside. Additional parking has been added. And, the grounds have been landscaped.

The Farmhouse enters its third century, ready to meet the needs of the community while preserving its long and rich tradition of history.

The Straits Corporation of Bay City, parent company of Feige's Interiors of Saginaw, has graciously donated to Delta College all furnishings on the first floor of the Farmhouse. These furnishings will provide a residential look to the facility.





It is the policy of Delta College not to discriminate on the basis of race, color, religion, sex, age, national origin or handicap in its educational programs, activities or employment.